

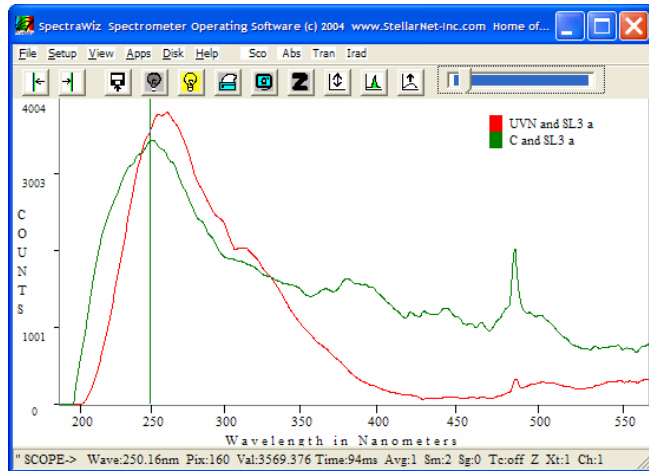
SL3 Deuterium Light Source for UV



Worlds smallest 4000 hour deuterium light source for CW (continuous wave) UltraViolet for the 190-450nm range.

- **UV Spectral Range** - covers the deep UltraViolet spectral range from 190-450nm.
- **Long Life** - 4,000 hour performance due to special air flow design and ultra quiet fan operation. One of our U.K. customers has reported continuous operation for over a year!
- **Exceptional Performance** - designed for maximum stability with precision power control it is ideal for UV spectroscopy.
- **Portability** - small size allows for use in field or mobile spectroscopy applications.

- **The SL3 Deuterium Light Source** - emits a deep UV spectral output over the 190- 450nm range and higher. When using the StellarNet concave grating spectrometers, the SL3 level is good past 550nm. See the comparison graph showing spectral curves from concave grating and CT grating spectrometers.
- **DCX Lens Option** - This add-on option increases the deuterium lamp intensity x7 times, and is highly recommended for highly absorbing samples and reflectance measurements.
- **Filter Options** - Integrated filter holder fits standard size 0.5 inch diameter disk filters. The U330-filter removes the deuterium spikes seen near 485nm.
- **UV and Vis Light** - The optional F400YB fiber optic bundle cable is used to combine the SL1 halogen and SL3 to cover wavelength ranges from 190-2200nm.



SL3 spectra using Concave & Czerny-Turner spectrometers

UV Light Source and Accessories

Item	Description
SL3	Fiber optic deuterium light source
SL3-CAL	With irradiance data diskette for 200-400nm
F400-YB-SRNIR	400um fiber optic Y bundle cable
Filter-U330	U330-Filter
LENS-DCX	Lens DCX add-on for x7 optical gain
SL3-spare bulb	Spare deuterium bulb - Hamamatsu L2D2

Specifications

Weight	1.8 pounds (816.5 g)	Output from bulb	free space into fiber optic
Power consumption	30 watts	Output regulation	0.05%
Spectral Range	190 – 450nm	Internal filter accessory	n/a
Time to stabilize output	15 min	External filter slot	holds 0.5 inch diameter filters
Power output	15 watts	Spectral attenuation	none
Bulb Color Temp	4000K	Connector	SMA905