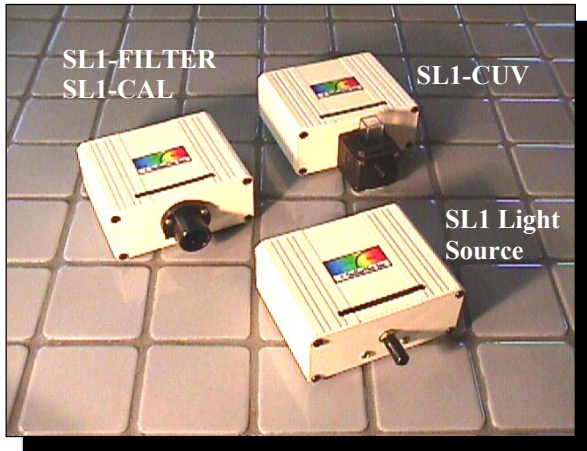
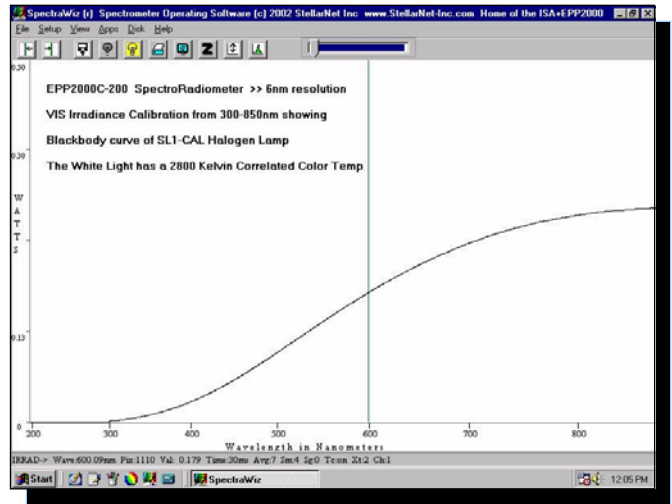


SL1 Tungsten Halogen Light Sources for VIS - NIR



- **350 nm-2200nm Spectral Range-** effective for color, reflectance and absorbance measurements
- **Extensive Life-** The SL1 has a 10,000 hour Tungsten Halogen lamp filled with Krypton gas
- **Great Compatibility/Versatility-** manipulate output with color-enhancing or signal-attenuating filters.
- **Small Footprint-** only 1.5" x 3" x 3.5"
- **Maximum Flexibility-** several models and options to choose from to meet all your application needs

- **The SL1-FILTER** includes a 0.5 inch diameter filter holder nose cone. Customers can use a variety of filters for spectral attenuation, band pass, and more. Includes filter to improve blue sensitivity.
- **SL1-CAL** is configured specifically for spectroradiometric calibrations (IRRAD-CALs). Includes diskette with intensity data that is used to irradiance calibrate any StellarNet spectroradiometer.
- **The SL1-CUV** adds a 1cm cuvette holder with integrated collimating lenses. Dual purpose allows the collimating lens to be demounted for far field emission monitoring.
- **SL1-BAT** is a unique option that adds a jack to the SL1 so it can be powered from 5VDC. Users can achieve complete portability with the BP1 battery pack for the spectrometer *and* the SL1-BAT.



SL1 Tungsten Halogen Black Body Spectrum

Light Sources and Accessories

| Item | Description |
|------------|---|
| SL1 | SL1 Tungsten Halogen light source - 10,000 hour |
| SL1-Filter | SL1 light source with filter holder nose + special filter |
| SL1-CUV | SL1 light source with integrated cuvette holder |
| SL1-CAL | SL1 light source with data diskette for 300-1100nm |
| SL1-BAT | Option connector allows +5V battery operation |
| SL1-BLUE | SL1 with 470nm Blue LED, replacing halogen bulb |
| SL1-LENS | for SL1-Filter, adds DCX+ triplet lens x4 light output |

Specifications

| | | | |
|----------------------------------|---------------------|----------------------------------|---------------------------|
| Weight | 0.62 pounds (280 g) | Output to bulb | 5VDC |
| Power consumption | 12 watts | Output regulation | 0.2% |
| Spectral range | 300 – 2200nm | Internal filter accessory | 2 inch square filter slot |
| Time to stabilize output | 1 min | External filter slot | SL1-Filter only |
| Power output | 200 watts | Bulb life | 10,000 hours |
| Optical color temperature | 2800K | Connector | SMA 905 |